

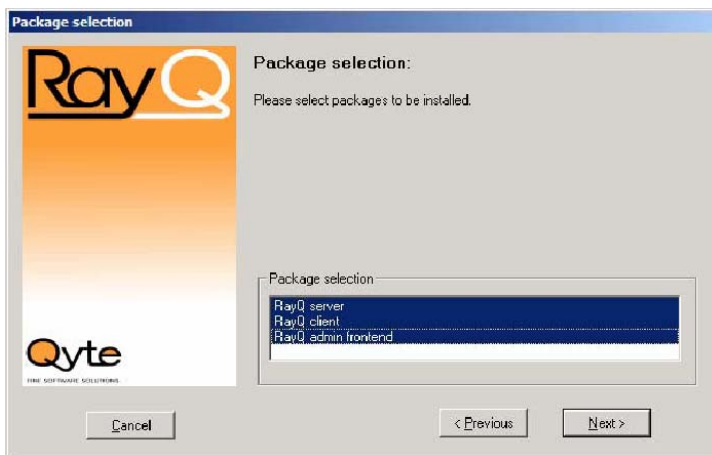
## Installation

### I. Installation

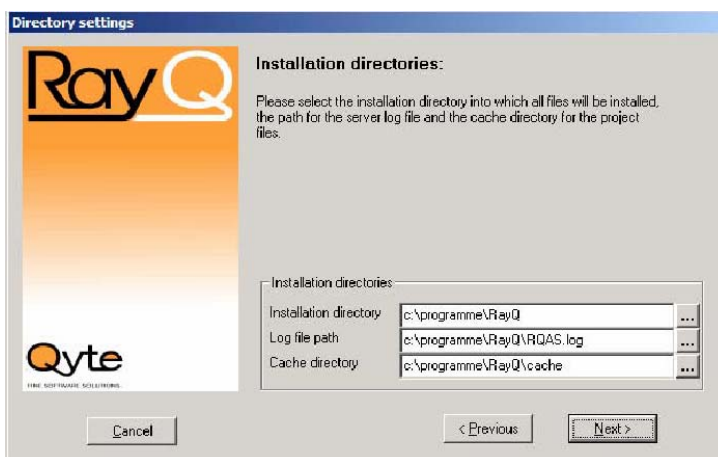
- a. Start the installation file SETUP.EXE.
- b. Click "Start".



- c. Select all the packet components using the mouse and click "Next".



- d. Check the path details and correct if necessary. Ensure that there is sufficient free memory in the "Cache directory". Click "Next".



e. Choose a password for the first user (administrator) and click "Next".



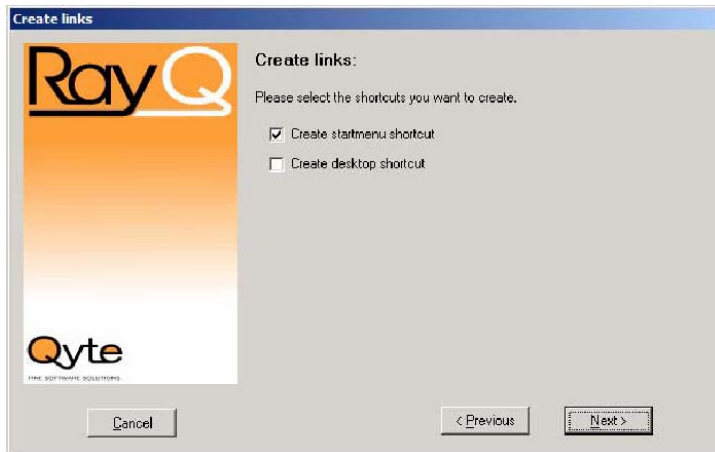
f. Select the database support to be installed. The ODBC driver is available in standard Windows installations. The ORACLE client must be installed on your system for direct access to ORACLE databases. Click "Next".



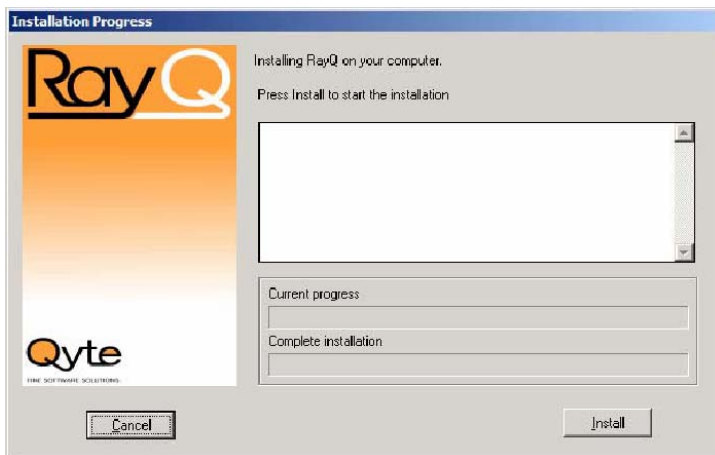
g. Select a free network port on your system and click "Next". The pre-set port 1111 is freely accessible in most systems. Only change this if problems arise.



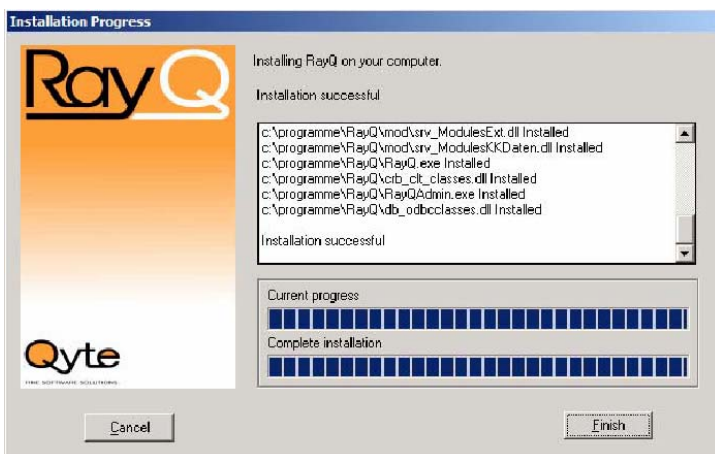
h. Select the desired option and click "Next".



i. Start the installation by clicking "Install".



j. End the installation program by clicking "Finish".

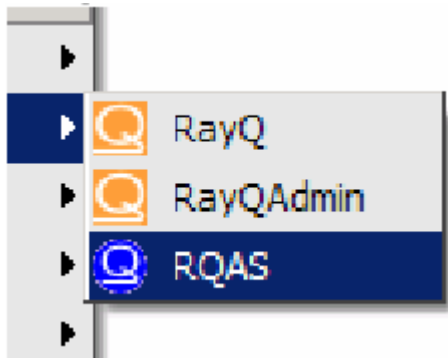


**2. Copy the licence key file LICENCE.LIC from the main directory of the installation CD, or as received by email, into the program directory containing the program RQAS.EXE ("C:\Programme\RayQ\" unless a different path was selected during the installation).**



### First steps

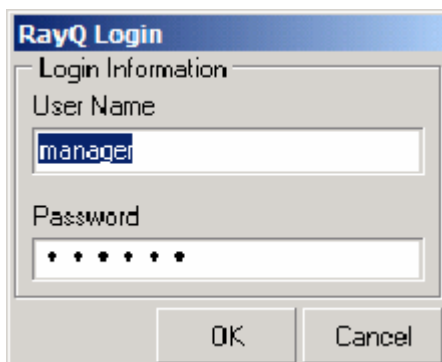
1. Start the RQAS program. A corresponding symbol will then appear in the system tray of your Start bar.



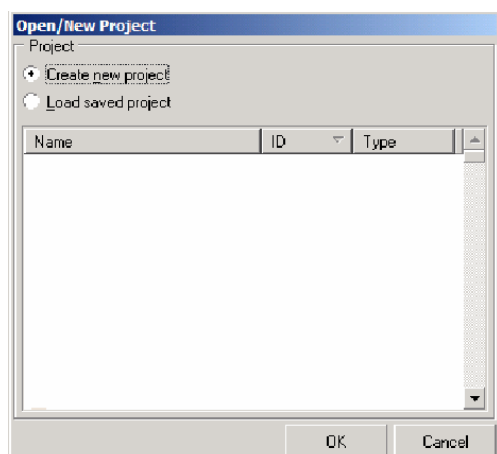
2. Start the RayQ program.

3. If an error message appears stating that the RayQ server could not be found, select the IP address 127.0.0.1 and the IP port you entered during the installation.

4. Register using the preset user name "manager" and the password you entered during the installation.

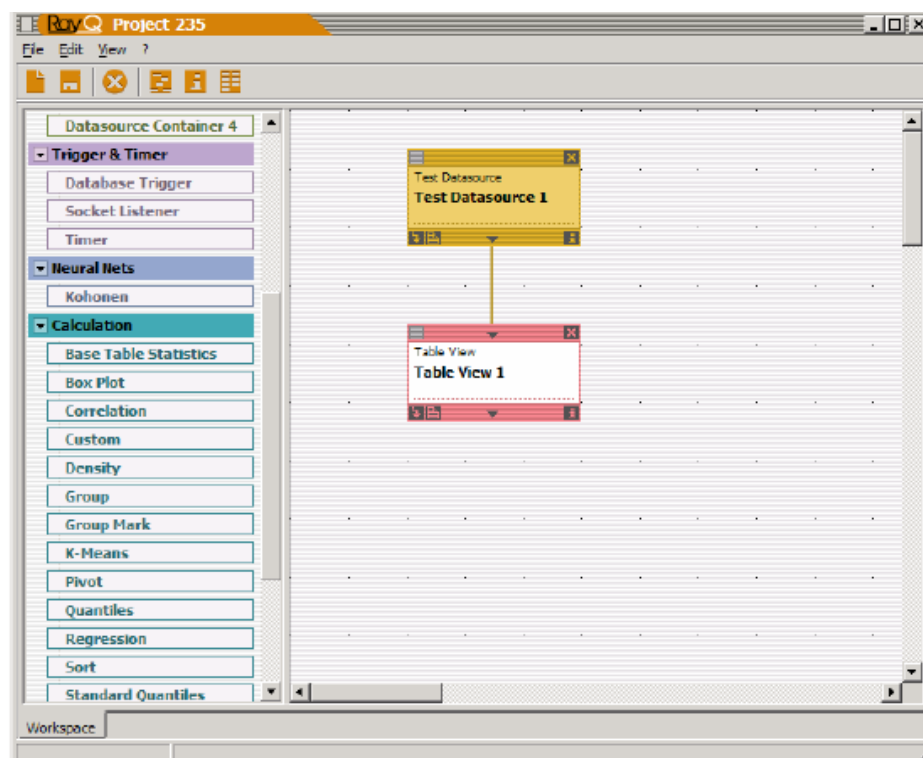


5. Start a new project and begin your analysis.

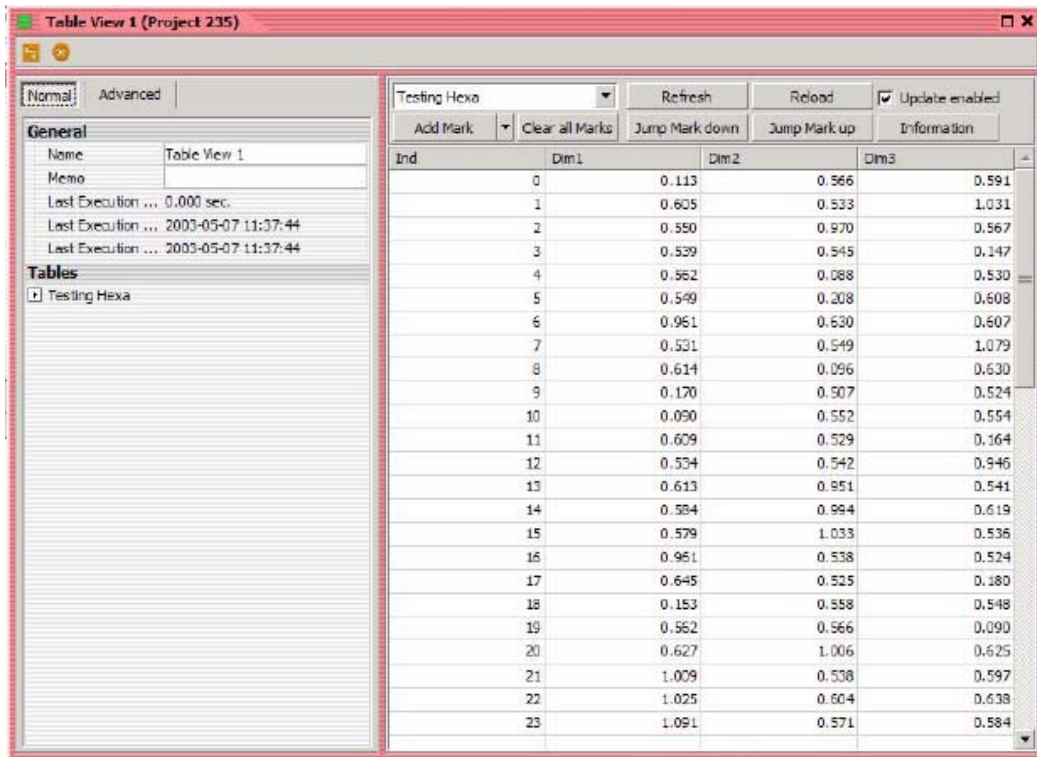


6. Example 1

- a. Using the mouse, drag the "Test Datasource" module from the left bar to the right into the RayQ Designer window.
- b. Using the mouse, drag the "Table View" module from the left bar to the right into the RayQ Designer window.
- c. Click and drag from the bottom arrow of the "Test Datasource 1" module to the top arrow of the "Table View 1" module.

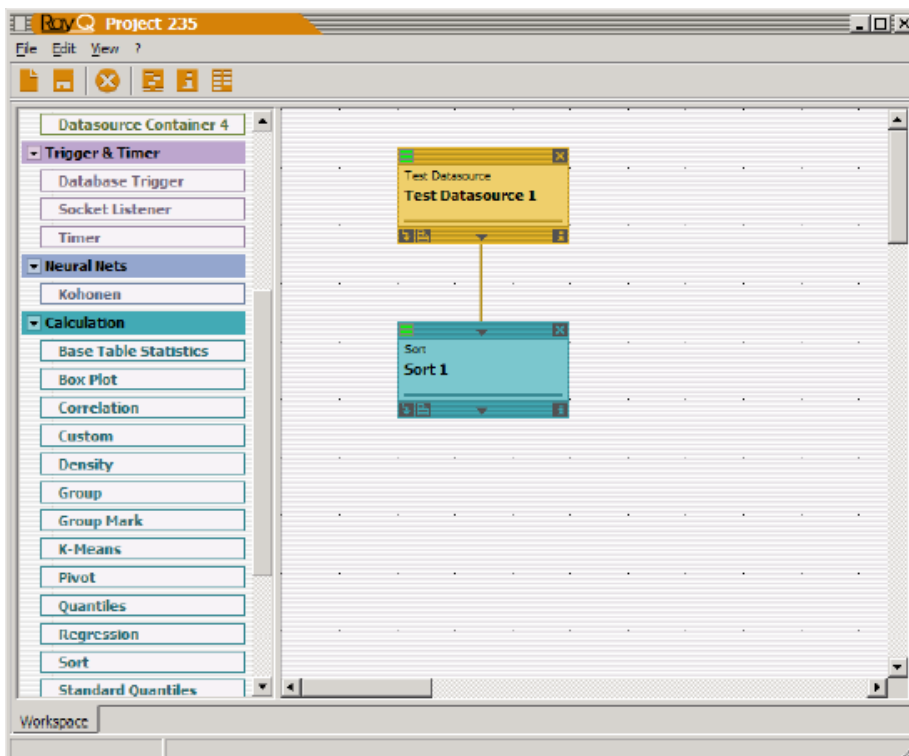


- d. Double click the "Table View I" module to open the view.
- e. Click the lightning symbol ("Execute") at the top left in the view of the "Table View I" module. The content of the tables supplied by the "Test Datasource I" module now appears in the tabular view to the right.



## 7. Example 2

- a. As Example 1, but instead of using a "Table View" select a module from the "Calculation" group, e.g. "Sort".

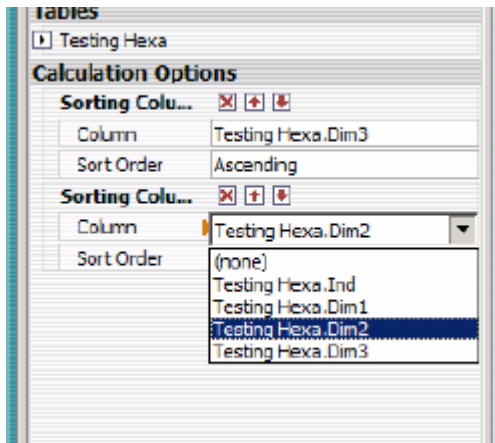


b. Before you can start "Execute" you must set the parameters in the opened view of the "Sort 1" calculation module.

i. Select the column by which the entire table is to be sorted in the right bar of the view beneath the "Calculation options" in the "Column" selection entry.

ii. Click the downwards arrow to create a second sorting level.

iii. In the sorting block which has just appeared select a further column by which the table is to be sorted.



c. Click "Execute". The result table on the right now contains the table which has been recalculated by "Sort 1" - in this case re-sorted.

